

# Expulsions & Deportations during the COVID-19 Pandemic



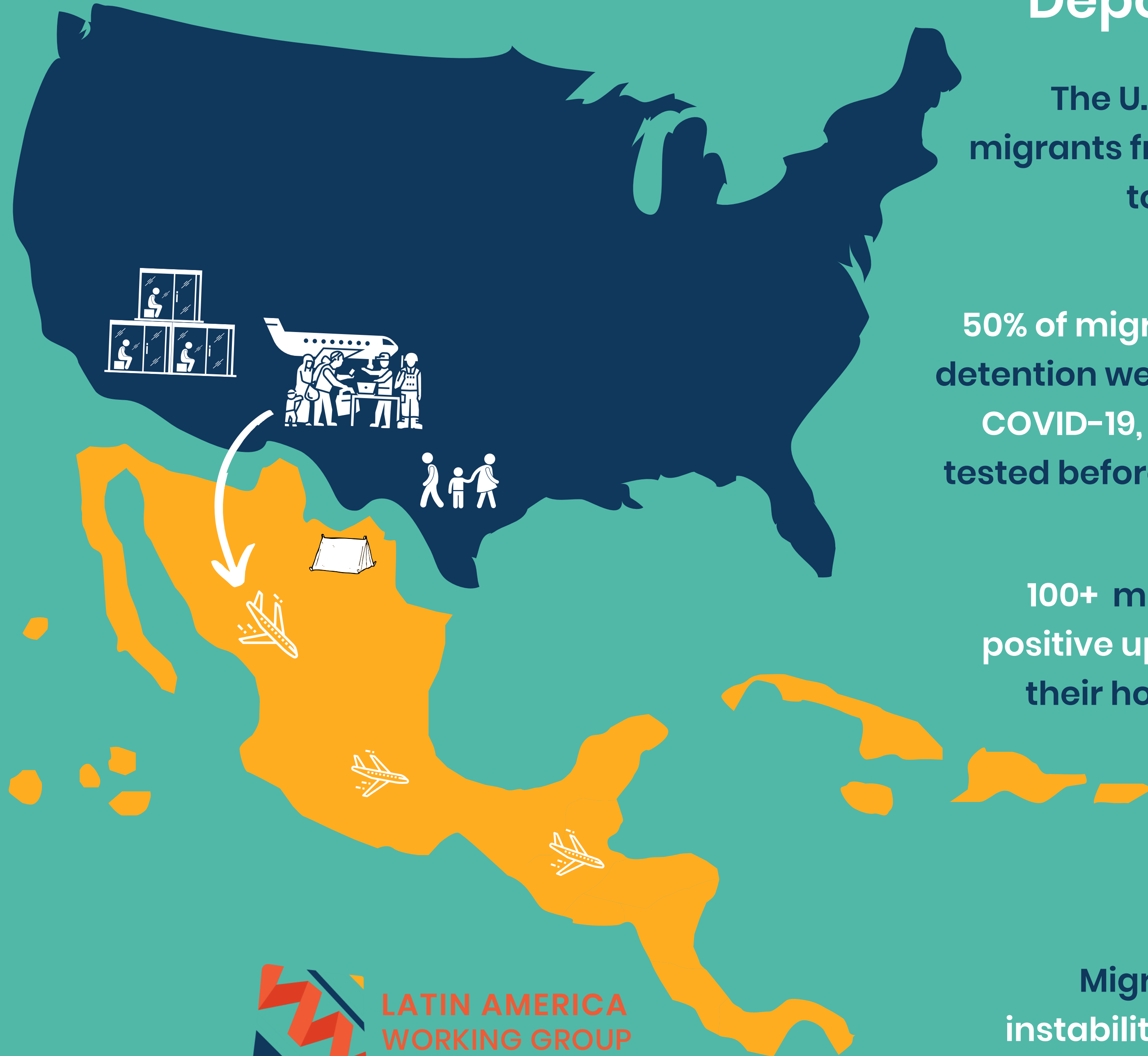
## Expulsions

Under a CDC order the border is closed to asylum seekers and they are quickly expelled.

40,000+ asylum seekers expelled so far.

Expulsions are illegal — they violate the right to seek asylum and protections for unaccompanied children.

\*All figures as of June 15, 2020



## Deportations

The U.S. is deporting migrants from detention to 11+ countries.

50% of migrants tested in detention were positive for COVID-19, but not all are tested before deportation.

100+ migrants tested positive upon landing in their home countries.

Migrants return to instability and danger.



LATIN AMERICA  
WORKING GROUP

[lawg.org/covid-19-resources/](http://lawg.org/covid-19-resources/)